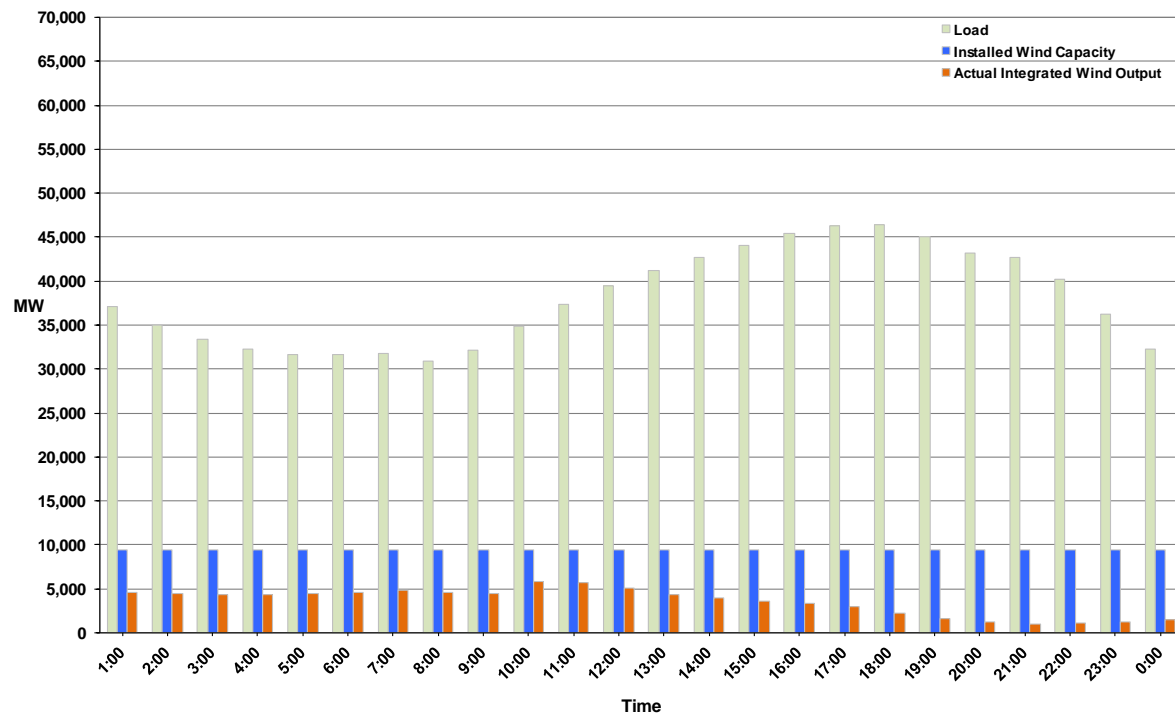




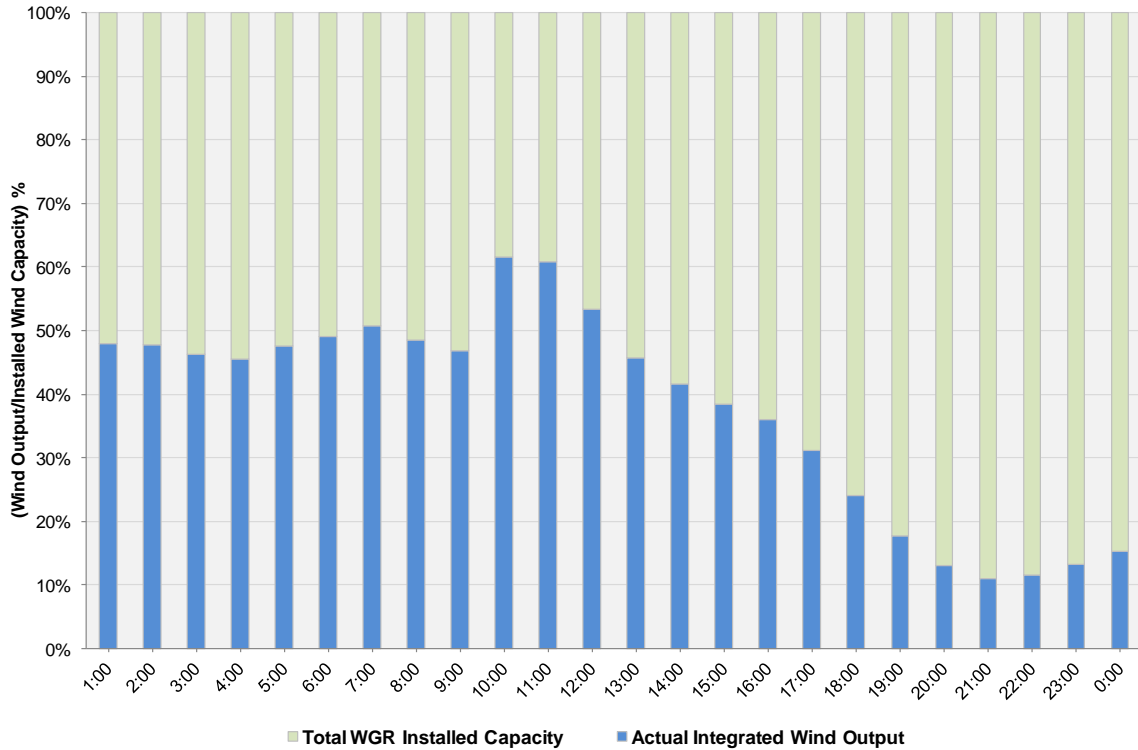
## ERCOT Grid Operations Wind Integration Report: 09/05/11

Peak Load	<b>46,388 MW</b>
Load Peak Hour	<b>18</b>
Wind over Peak	<b>2,278 MW</b>
Wind Record 06/19/11	<b>7,355 MW</b>
Max Wind Value	<b>6,320 MW</b>
Wind Peak Time	<b>09:52:00</b>
Wind Integration %	<b>17.66%</b>

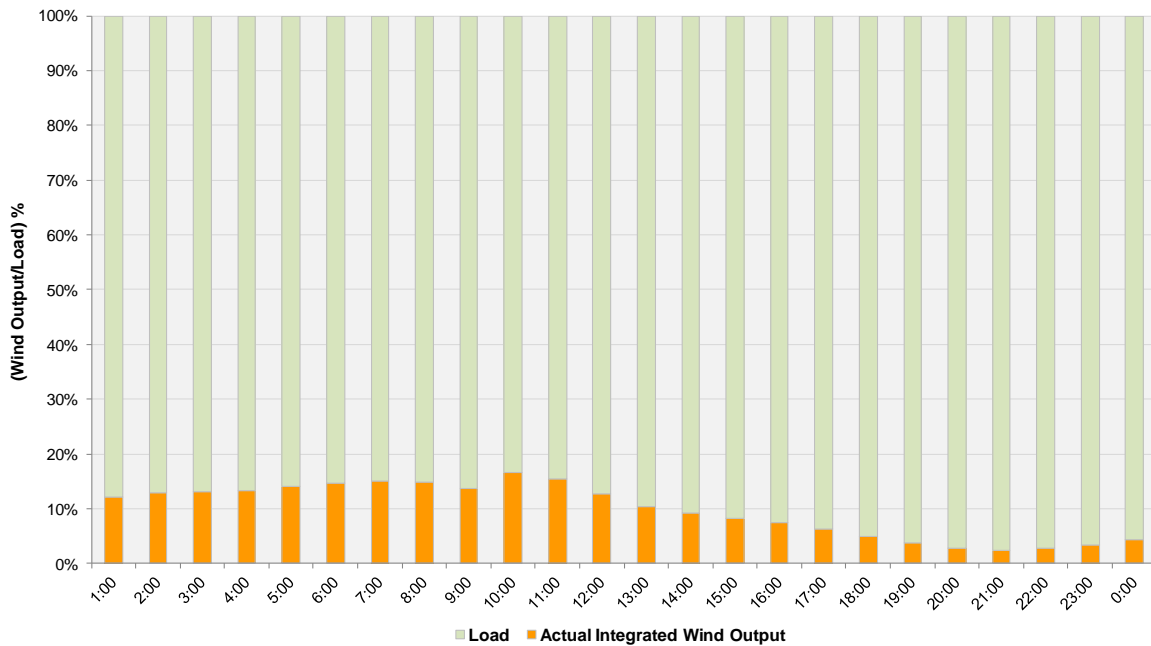
**Hourly Average Actual Load vs. Actual Wind Output  
09-05-2011**



**Actual Wind Output as a Percentage of the Total Installed Wind Capacity**  
**09-05-2011**



**Actual Wind Output as a Percentage of the ERCOT Load**  
**09-05-2011**



ERCOT Load vs. Actual Wind Output 8/29/2011 - 9/5/2011

